

# HUSHPUPPIES TOUR 2011

## DOSSIER LUMIERE

<b>Lighting Design:</b>	Pierre "Pedro" PASQUET
<b>Assistant:</b>	Pierre Clause
<b>Régie générale:</b>	Cedric Kerjan
<b>Production:</b>	Imperial prod
<b>Salle:</b>	toutes
<b>Mis à jour le:</b>	10.03.2011
<b>GSM</b>	(+33)6.74.02.00.25
<b>E mail:</b>	pedrolight@orange.fr

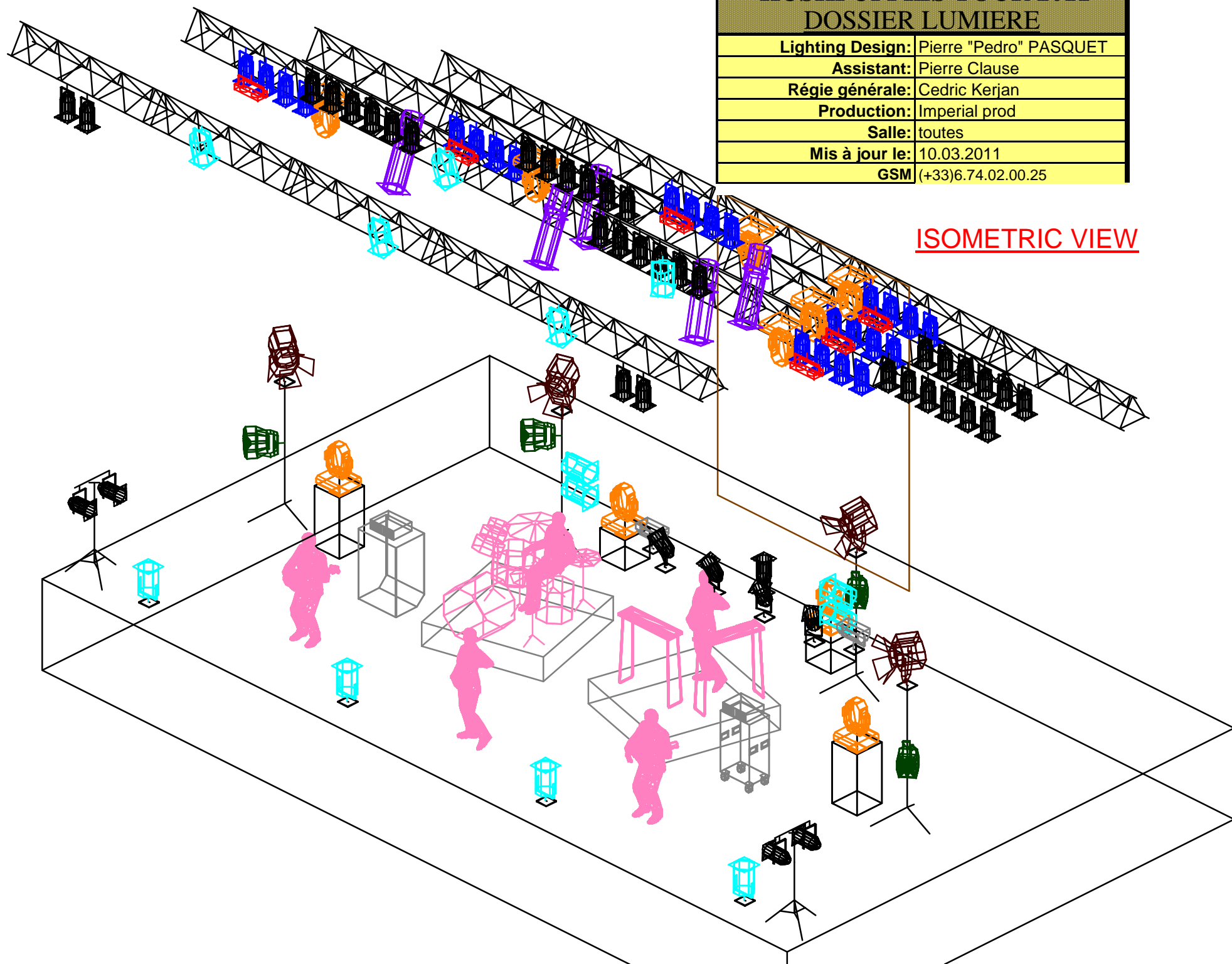


# HUSHPUPIES TOUR 2011

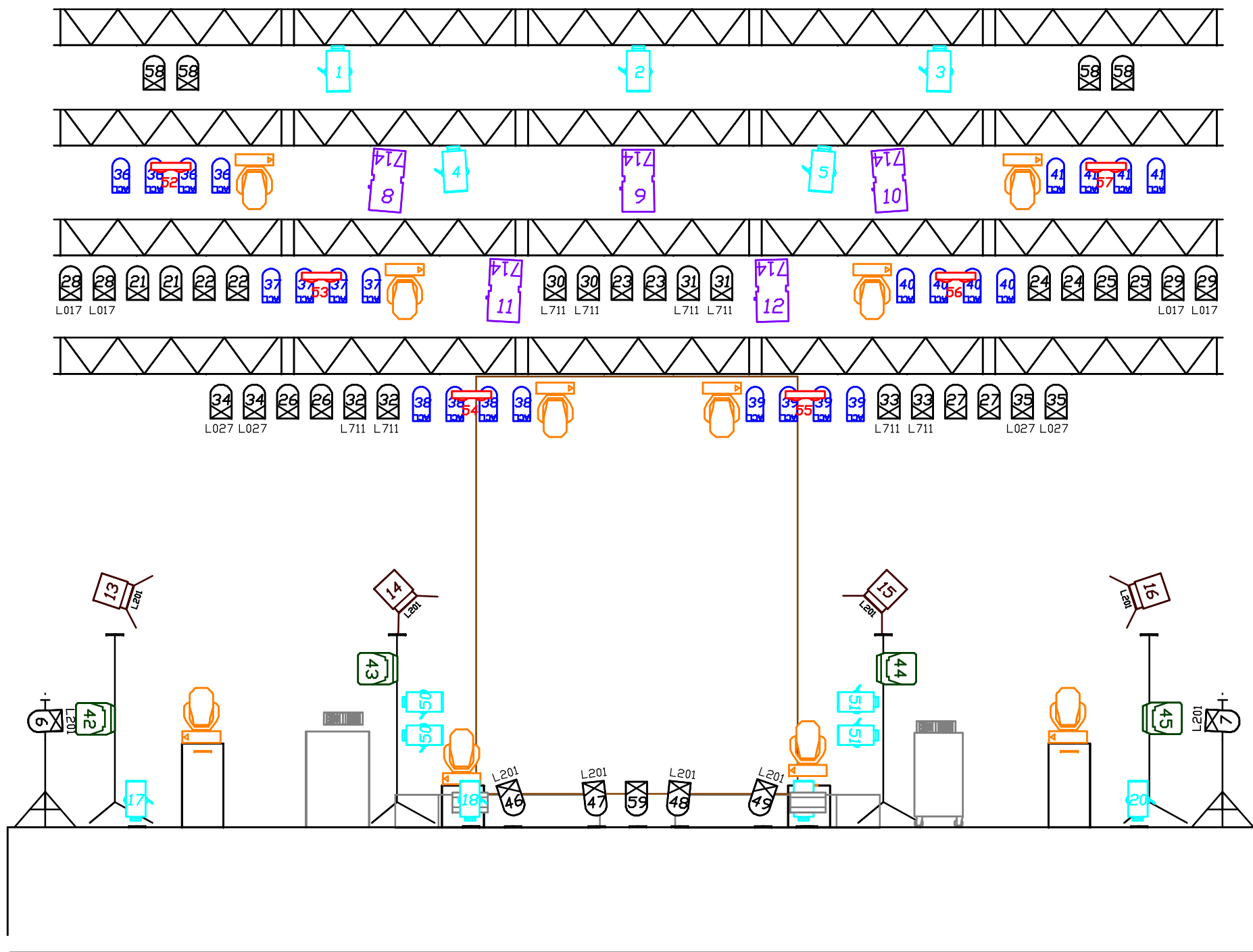
## DOSSIER LUMIERE

<b>Lighting Design:</b>	Pierre "Pedro" PASQUET
<b>Assistant:</b>	Pierre Clause
<b>Régie générale:</b>	Cedric Kerjan
<b>Production:</b>	Imperial prod
<b>Salle:</b>	toutes
<b>Mis à jour le:</b>	10.03.2011
<b>GSM</b>	(+33)6.74.02.00.25

ISOMETRIC VIEW



# ALL LIGHTS FRONT VIEW



10m

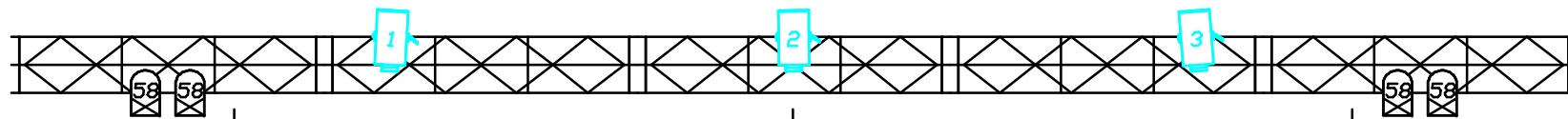
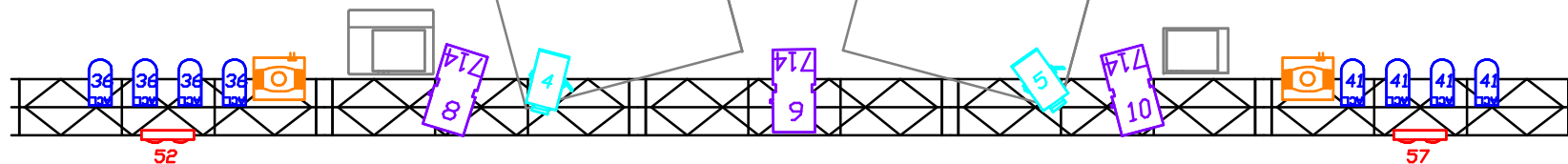
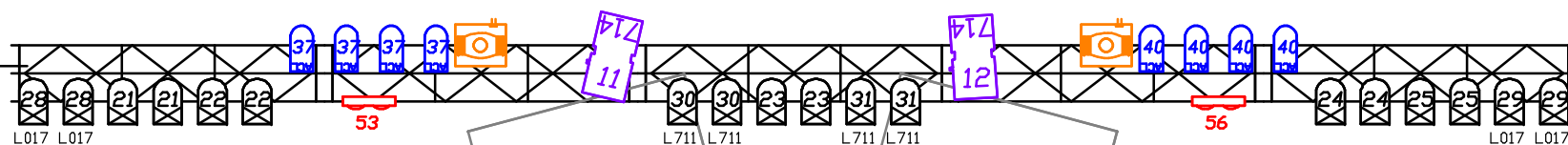
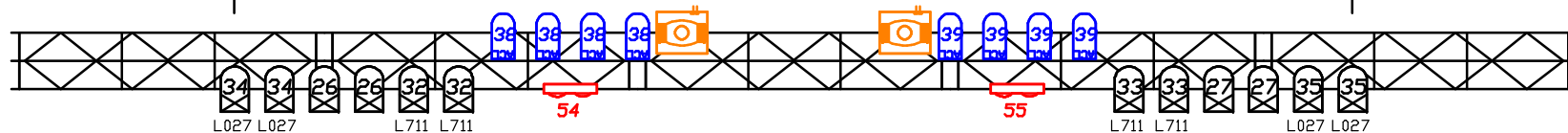
## TRUSS LIGHTS TOP VIEW

10,00m

merci de prévoir un tube pour le backdrop

5m

0

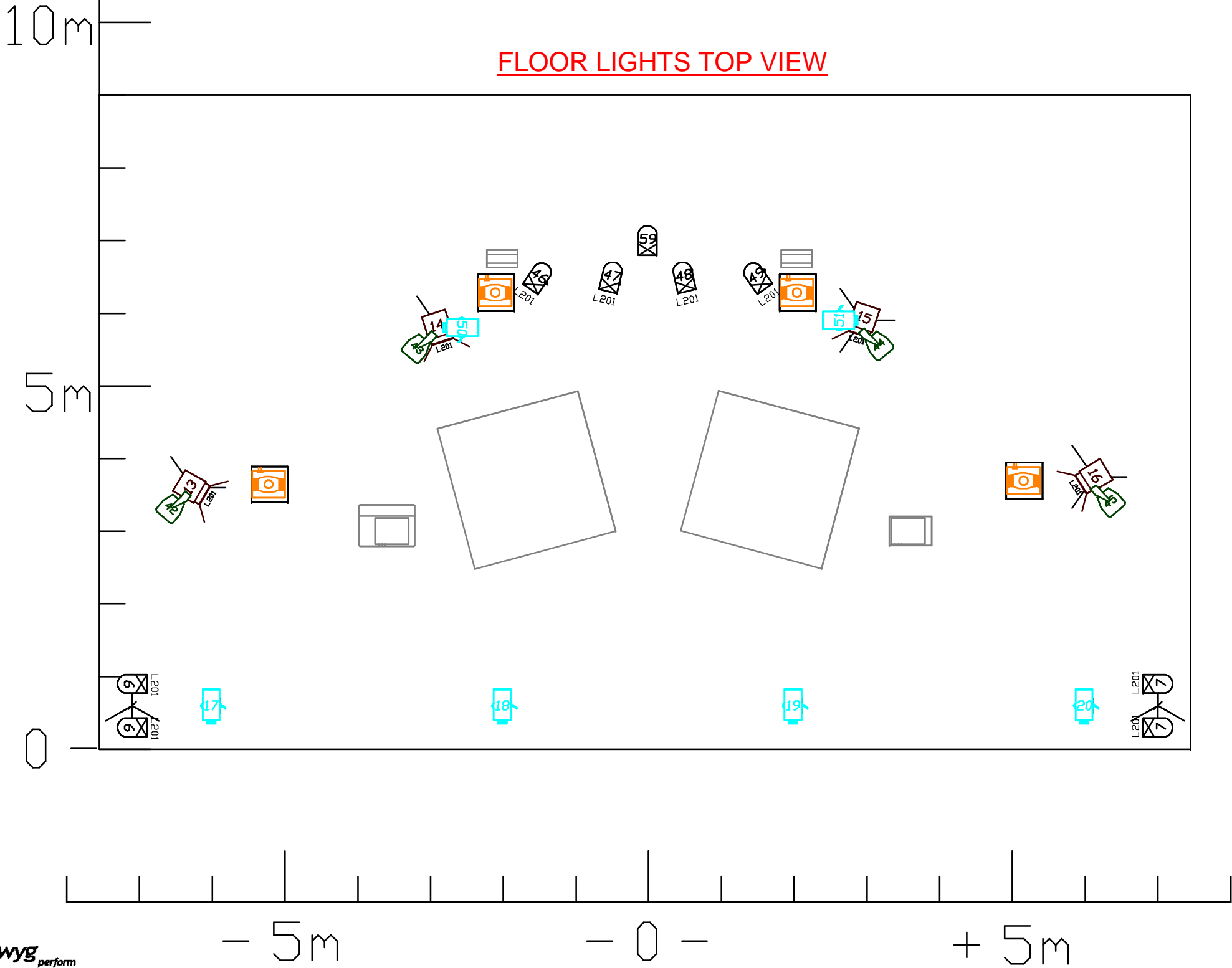


- 5m

- 0 -

+ 5m

FLOOR LIGHTS TOP VIEW

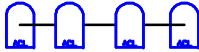

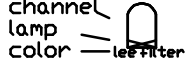










# HUSHPUPIES TOUR 2011

## DOSSIER LUMIERE

<b>Lighting Design:</b>	Pierre "Pedro" PASQUET
<b>Assistant:</b>	Pierre Clause
<b>Régie générale:</b>	Cedric Kerjan
<b>Production:</b>	Imperial prod
<b>Salle:</b>	toutes
<b>Mis à jour le:</b>	10.03.2011
<b>GSM</b>	(+33)6.74.02.00.25
<b>E mail:</b>	pedrolight@orange.fr

## LIGHTS LEGEND

	6 x BARRES ACL 28 v 250 w
	5 x BARRES DE PAR 64 CP61(NSP)
	13 x PAR 64 1000W CP61(NSP)
	5 x DECOUPES 714 SX
	5 x PC 2 KW
	8 x PC 1 KW
	4 x FRESNELS 2 KW AVEC VOILETS(ou equivalent)
	6 x FL1300
	4 x VERSATILES
	2 x STROBES ATOMIC3000 (ou equivalent)
	10 x MAC700 SPOT (ou equivalent)
	1 x MACHINE A BROUILLARD MDG3000
	1 x CONSOLE GRANDMA LIGHT+ECRAN
	1 x MA LIGHTCOMMANDER 48 / 96
	2 x VENTILATEURS
	7 x PIEDS 2 M MINI
	MERCI DE PREVOIR UN TUBE DE 10 M POUR LE BACKDROP
	MERCI DE PREVOIR 2 LIGNES GRADUE AU SOL+1 DIRECT
	GELATS LEE :711 – 201 – 027 – 017